



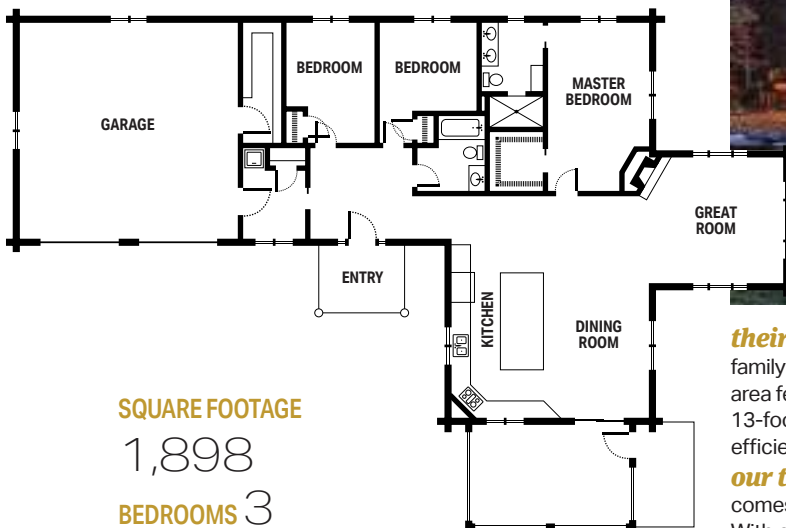
*What does it take to receive top honors from the National Association of Home Builders' Log & Timber Homes Council? Just turn to these winning designs for the answer.* By the Editors

Each year, LTHC members vie to have their latest and greatest floor plans and home designs recognized by a panel of independent, expert judges, and this year, seven stellar log and timber home plans walked away from the prestigious "Jerry Rouleau Awards for Excellence in Home Design" competition victorious. We're honored to showcase these winners exclusively for you.

## UNDER 2,000 SQUARE FEET

### RIVERVIEW

TRUE NORTH LOG HOMES  
[truenorthloghomes.com](http://truenorthloghomes.com)



SQUARE FOOTAGE

1,898

BEDROOMS 3

BATHS 2 full



**their goal** Creating a modern log cabin that makes an ideal family home was the design edict at the root of this plan. Every area feels bright and open, from the layout (visually enlarged by 13-foot-tall ceilings) to the finishes, while the L-shaped plan is efficient and effective.

**our take** Just when you thought you knew log cabins, along comes the Riverview. We can't get enough of its unique charisma. With everything you'd need on one level, the design maximizes its square footage by eliminating the need for stairs. And though it lacks a second story, the double-height foyer is light-filled and airy, creating an impressive entryway to a small-scale home.